

Appendix I
Preferred Route
– Preferred Route
Third Round of
Public Consultation
November 2020

Ringsend to City Centre

Core Bus Corridor Preferred Route

Third Round of Public Consultation
November 2020

16





Contents

1. Introduction	1
1.1 What is BusConnects?	1
1.2 What are the aims and objectives of BusConnects Core Bus Corridors?	3
1.3 What has happened so far?	4
1.4 What is in this brochure?	4
1.5 A map of all 16 core bus corridors	6
2. What has been happening over the last few months?	7
2.1 Technical Design	7
2.2 Environmental Impact Assessment	7
2.3 Transport Impact	7
2.4 Urban Realm	9
2.5 Compulsory Purchase Maps & Schedules	9
2.6 Timeline for the Core Bus Corridor Process	10
3. How to take part in the public consultation	11
3.1 General queries	11
3.2 How to engage	11
3.3 What happens next?	11
4. Preferred Route Description	13
4.1 Overview	13
4.2 Custom House Quay, North Wall Quay on North Side of the River Liffey	14
4.3 City Quay, Sir John Rogerson's Quay on South Side of the River Liffey	14
4.4 Samuel Beckett Bridge	14
4.5 Tom Clarke Bridge to Sean Moore Road - York Road	15
4.6 Key Changes from the Preferred Route Published in March 2020	16
4.7 Key Facts	16
5. Understanding the terminology	17
6. Appendices	19
6.1 Index Map	20
6.2 Route Maps	21

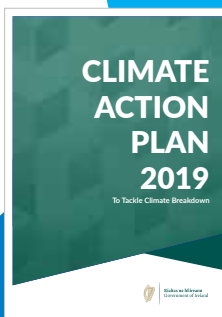
1. Introduction

1.1 What is BusConnects?

BusConnects is the National Transport Authority's (NTA) programme to greatly improve bus and sustainable transport services. It is a key part of the Government's policies to improve public transport and address climate change in Dublin and other cities. Dublin is growing and needs a bus network that works for a developing city. The aim of BusConnects is to deliver an enhanced bus system that is better for the city, its people and the environment.

BusConnects is included in the Programme for Government "Our Shared Future" 2020, as well as within the following Government strategies:

- ▶ The National Development Plan 2018 - 2027;
- ▶ Transport Strategy for the Greater Dublin Area 2016 - 2035
- ▶ The Climate Action Plan 2019.



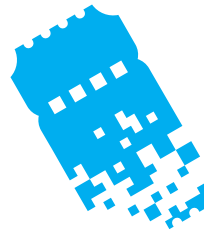
BusConnects Dublin is a programme of 9 elements

BUS → **230km** of bus priority making journeys faster and more reliable

CYCLE → **200km** of cycle routes



Transitioning to a new
low emissions bus fleet



State of the art
ticketing system

Cashless payment system



Simpler fare structure



New Park & Ride
sites in key locations



New bus livery

providing a common style across all operators



New bus stops and shelters

with better signage and information



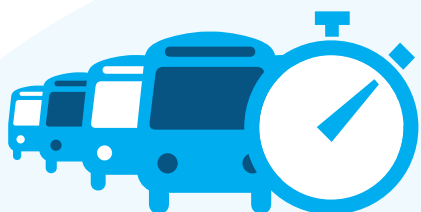
Dublin area bus network redesign

creating a more efficient network with high frequency spines, new orbital routes and increased bus services

1.2 What are the aims and objectives of BusConnects Core Bus Corridors?

Aims: The aim of BusConnects Core Bus Corridors is to provide enhanced walking, cycling and bus infrastructure on key access corridors in the Dublin region, which will enable and deliver efficient, safe, and integrated sustainable transport movement along these corridors.

Objectives:



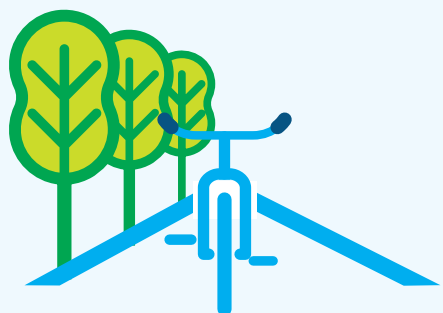
Enhance the capacity and potential of the public transport system by improving bus speeds, reliability and punctuality through the provision of bus lanes and other measures to provide priority to bus movement over general traffic movements;



Support the delivery of an efficient, low carbon and climate resilient public transport service, which supports the achievement of Ireland's emission reduction targets;



Improve accessibility to jobs, education and other social and economic opportunities through the provision of improved sustainable connectivity and integration with other public transport services; and



Enhance the potential for cycling by providing safe infrastructure for cycling, segregated from general traffic wherever practicable;



Enable compact growth, regeneration opportunities and more effective use of land in Dublin, for present and future generations, through the provision of safe and efficient sustainable transport networks;



Ensure that the public realm is carefully considered in the design and development of the transport infrastructure and seek to enhance key urban focal points where appropriate and feasible.

1.3 What has happened so far?

Between November 2018 and May 2019 the National Transport Authority (NTA) carried out the first round of public consultation regarding proposals for the Emerging Preferred Routes of 16 Core Bus Corridors (CBC) across Dublin. During this first round of consultation we received 13,000 submissions in total. These submissions were reviewed and considered as part of the design process for the Preferred Route option for each corridor.

A second round of public consultation on the Preferred Route options commenced in March 2020 and continued until mid-April 2020. Notwithstanding the Covid-19 pandemic and subsequent Government restrictions, the consultation continued due to the level of interest. The focus of public queries and submissions came through emails, post, phone conversations and online submissions as all the information was available on the BusConnects website for review.

It was decided in March that an additional third round of public consultation would take place in the latter part of this year to provide further opportunities for the public to review and submit feedback to the latest set of designs.

1.4 What is in this brochure?

This document is one of 16, each dedicated to a single core bus corridor. The document provides a written description of the Preferred Route from start to finish with supporting maps. It includes all revisions made, if any, since the last round of public consultation. It also includes a revised timeline for the progress of the programme due to Covid19 implications.

The brochures detailing the Emerging Preferred Route and the brochures from the second round of consultation earlier this year are available to view and download on our website www.busconnects.ie.

Definitions of the terminology used in the document can be found in chapter 4 of this this brochure.





1.5 A map of all 16 core bus corridors

Preferred Routes

1. Clongriffin to City Centre
2. Swords to City Centre
3. Ballymun to City Centre
4. Finglas to Phibsborough
5. Blanchardstown to City Centre
6. Lucan to City Centre
7. Liffey Valley to City Centre
8. Clondalkin to Drimnagh
9. Greenhills to City Centre
10. Tallaght to Terenure
11. Kimmage to City Centre
12. Rathfarnham to City Centre
13. Bray to City Centre
14. UCD Ballsbridge to City Centre
15. Blackrock to Merrion
16. Ringsend to City Centre



2. What has been happening over the last number of months?

Considerable design work has been continuing since the last round of consultation. This work includes the following:

2.1 Technical Design

Designs have progressed with further refinements being made to elements of each corridor such as junctions, alignments, bus stops, cycling and walking facilities, and urban realm features. Engagement with stakeholders is continuing including engagement with individual householders directly impacted. The developing design has been, and continues to be, informed by stakeholder engagement and further detailed surveys. These include the identification of underground services and detailed assessment of trees along the routes.

Draft Preferred Route Option Reports have been prepared for each CBC detailing the

development of each corridor from the Emerging Preferred Route through to the draft Preferred Route Option. These draft “Preferred Route Option Reports” are being published as part of the public consultation and will be finalised following this third round of public consultation and the inclusion of feedback received. **These draft reports are available to view and download on the website www.busconnects.ie.**

2.2 Environmental Impact Assessment

As part of the intended planning application for each corridor, the NTA will be preparing an Environmental Impact Assessment Report (EIAR) in accordance with current Irish and European legislation. This document will identify the anticipated environmental effects of the scheme during both the construction and operational stages. This assessment is being undertaken by environmental specialists on behalf of the NTA. As part of this assessment, these specialists are undertaking studies of the current condition of the receiving environment within the identified corridor extents. This involves a combination of on-site surveys and desktop study of existing records. At the time

of this public consultation, various surveys and studies are underway. The information collected will also be shared with the technical designers for consideration in the design decision making process for the infrastructure works.

Further details of the environmental assessment approach for each scheme are outlined in an individual corridor document called “Information on the Proposed Approach to Environmental Assessment”. This document gives a more in-depth description of the determination of the extents of anticipated impacts and how the cumulative impacts of adjacent core bus corridors and other construction projects will be assessed.

These draft reports are available to view and download on the website www.busconnects.ie.

2.3 Transport Impact

The transport assessment of the core bus corridor proposals is focussed on the “movement of people” rather than, solely, the “movement of vehicles”. In order to adequately determine the impact on public transport, active modes (walking and cycling), and general traffic, a comprehensive suite of transport models have been developed.

An extensive set of traffic counts were undertaken in late 2019 and early 2020 and this data, along with other sources, has been used to calibrate and validate the models to assist in the evaluation of the core bus corridors. On a strategic level, the Eastern Regional Model has been used to forecast the modal split for future years. At a more refined level, a Local Area Model has been developed to examine the potential displacement of traffic. In addition, detailed modelling is ongoing in terms of junction and corridor analysis tests and to quantify the effect on the movement of people through each junction and along the corridor itself.

Each EIAR will contain a section on the potential traffic and transport impacts associated with the construction and operational phases of the core bus corridors. This assessment will be informed by the following reports:

- ▶ Transport Impact Assessment (TIA)
 - this will include the comprehensive assessment of each core bus corridor covering all modes and will include a cumulative assessment of all corridors; and



- ▶ Transport Modelling Report – this will detail the model development, data inputs, calibration and validation, and forecast model development for the set of models used to support the assessment.

A draft, work-in-progress version of the “Transport Modelling Reports” for each core bus corridor, together with a summary of the work-in-progress strategic modelling results to-date, are being published as part of the public consultation and will be finalised following this third round of public consultation and the inclusion of feedback received. **These draft reports are available to view and download on the website www.busconnects.ie.**

2.4 Urban Realm

In tandem with the technical design work on finalising the road alignment in the urban cross sections across the core bus corridors, planning has also progressed for refining the Urban Realm design proposals. These designs are being developed in consultation with the local authorities to ensure tie-in to existing schemes and initiatives. The NTA is focusing on finishing the layout of spaces, considering desire lines (how people want to move through spaces) and

the placement of urban furniture (trees, bins, bollards, benches, bike stands, railings, etc.)

Urban Realm improvement opportunities along the routes present themselves through the civil/physical works needed to reach the BusConnects objective to provide bus priority, along with improved cycling and pedestrian facilities. All put together, the core bus corridors provide an opportunity for lots of continuous interventions that, together, can give a general city-wide lift.

The Urban Realm improvement opportunities are spread out along the core bus corridors and need to respond to and reflect specific locality and context. In the design of the urban spaces we will be using appropriate materials and urban furniture that comply with standards for use, durability and maintenance as well as carbon footprint considerations.

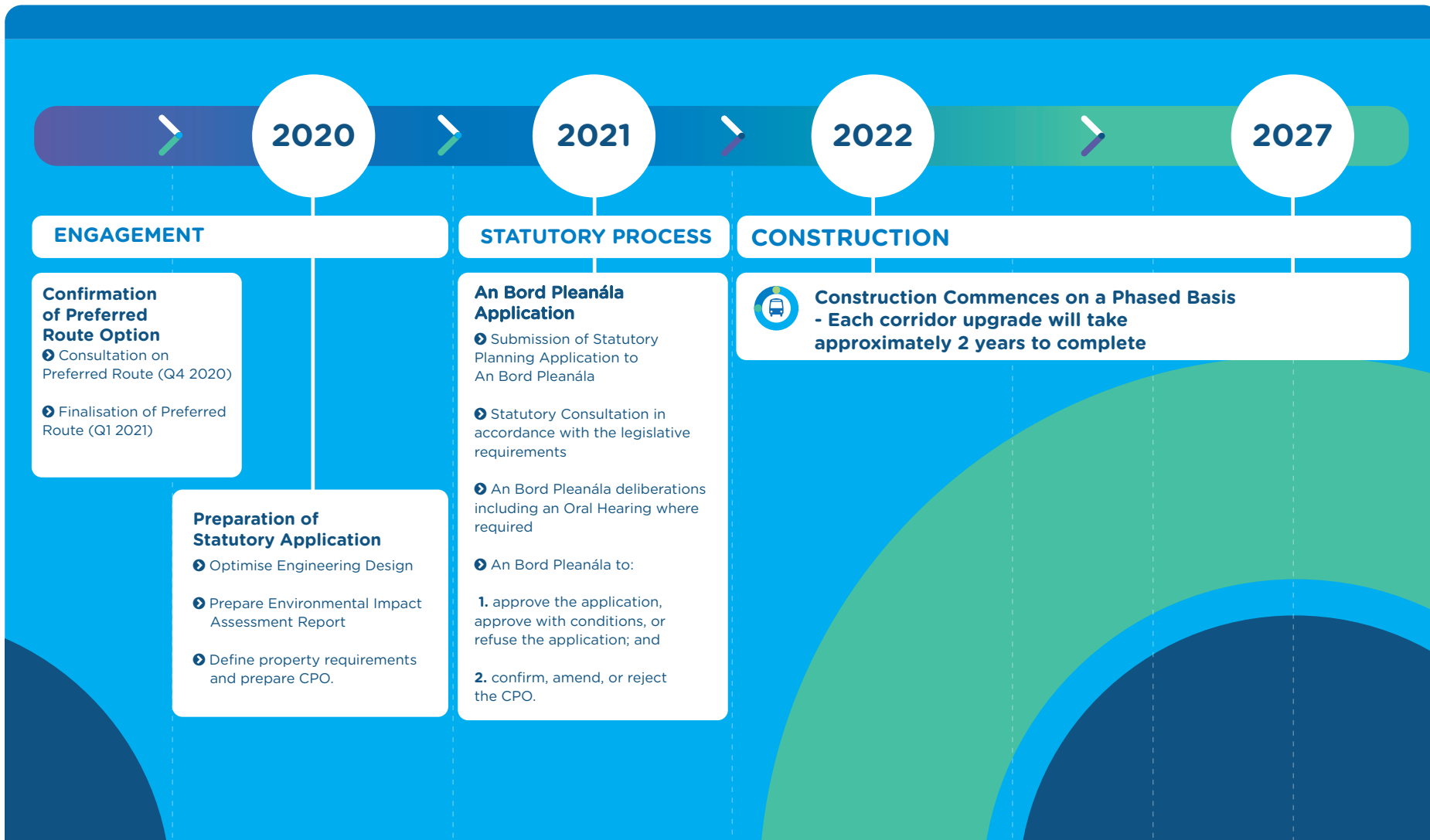
Further details of the urban realm design approach can be found in a document called “BusConnects Urban Realm Concept Design” published as part of the public consultation. **This document is available to view and download on the website www.busconnects.ie.**

2.5 Compulsory Purchase Maps & Schedules

In tandem with the technical design work the designers will be starting the work of preparing the various maps and schedules of areas that are proposed to be acquired under the statutory compulsory purchase order process (CPO). The attached Maps in this brochure indicate Proposed New Boundaries (Possible Land Acquisition) represented by broken red lines. These boundaries are indicative of potential areas for permanent CPO, and are not yet finalised. As detailed plots are finalised the designers will be continuing to seek to meet those with an interest in the impacted areas.

In some cases there may also be a need to realign driveways and/or redo the landscaping of property front gardens, or reorganise business accesses and/or loading areas. Some of these works may be outside the permanent CPO area, and consequently there may be a need to put in place temporary arrangements to ensure access during construction to carry out necessary accommodation works. Similar to the permanent CPO development, the designers will be continuing to seek to meet those with an interest in the impacted areas.

2.6 Timeline for the Core Bus Corridor Process



3. How to take part in the public consultation

This brochure provides details of the proposed Preferred Route Option for this core bus corridor. These proposals are subject to a third non-statutory round of public consultation, and subsequent design refinement and environmental impact assessment, before a formal statutory application will be made by the NTA to An Bord Pleanála for approval.

Virtual consultation rooms for each Core Bus Corridor can be found on www.busconnects.ie. These rooms will provide a description of each Preferred Route from start to finish with supporting maps and include information of all revisions made, if any, since the last round of public consultation as well as other supporting documents.

3.1 General queries

The project website www.busconnects.ie has a dedicated section for the Core Bus Corridor


project. All previous emerging preferred route brochures are available on the website. Users can access the site to find out more about the project and download copies of the key documents.


General queries can be directed to a dedicated Freephone – **1800 303 653** or by email to cbc@busconnects.ie

3.2 How to engage

We are inviting submissions in relation to the Preferred Route Options set out in this document. The closing date for submissions is stated on the website.

Written submissions and observations may be made by:

 cbc@busconnects.ie

 BusConnects Core Bus Corridors
National Transport Authority,
Dún Scéine, Harcourt Lane, Dublin 2
D02 WT20

3.3 What happens next?

Following the third round of public consultation, the NTA will finalise the Preferred Route Options for all sixteen corridors. The scheme designs will be finalised, transport and environmental impact assessments will be completed.

This will culminate in the preparation of an Environmental Impact Assessment Report (EIAR) for the scheme together with details of land to be acquired. This will be submitted to An Bord Pleanála in 2021 for its consideration and determination. A formal statutory consultation process will be undertaken as part of that process.



4. Preferred Route Description

4.1 Overview

The Ringsend to City Centre Core Bus Corridor (CBC) commences at Talbot Memorial Bridge. The route encompasses bus lane and cycle infrastructure on both north and south quays connecting the city centre with the Docklands and onto Ringsend and Irishtown.

Priority for buses is provided along the entire length of the North Quays, from the Custom House to the 3-Arena at Tom Clarke Bridge, consisting of dedicated bus lanes in each direction.

Segregated two-way cycle tracks will be provided in the campshires on both sides of the River Liffey. A cycle route will extend through Ringsend and Irishtown towards the Poolbeg Peninsula.

The following paragraphs will describe each section of the CBC in more detail, identifying the key design revisions which have been incorporated into the design since the publication of the Preferred Route Option in March 2020.

4.2 Custom House Quay, North Wall Quay on North Side of the River Liffey

Continuous bus lanes are proposed in both directions on Custom House Quay and North Wall Quay between the Matt Talbot Bridge and the Tom Clarke Bridge. This will secure improved bus priority along the north quays. The historic Scherzer Bridges constrain the road width at the crossing of the canal entrance to George's Dock and the Royal Canal at Spencer Dock. These historic structures no longer serve their original function and are unsuitable to the needs of the modern street, which is much busier since the eastward expansion of the city. These structures will be repositioned either side of the new bus and general traffic lane cross-section such that the pedestrian footway and cycle track will pass through them instead.

In order to protect bus priority, right-turning restrictions are proposed at most junctions along the north quays where alternative access is available from Seville Place and Sheriff Street Upper to the north.

The two-way cycle infrastructure on the North Wall Quay will be enhanced and will continue along the full extent of the north quays. A general landscaping arrangement is proposed along the north quays, with two lines of trees along the proposed cycleway. There are width constraints at the two small restaurant buildings at the Excise Walk junction, where a new boardwalk is proposed to overhang the river for a wider pedestrian space on the riverside.

4.3 City Quay, Sir John Rogerson's Quay on South Side of the River Liffey

Improved cycle facilities are proposed linking from the Samuel Beckett Bridge to Cardiff Lane and Sir John Rogerson's Quay. Existing traffic circulation will be maintained with the following exceptions:

- a short length of westbound bus lane will be provided on City Quay West between Lombard Street East and Moss Street, reducing the existing two-lane eastbound general traffic arrangement to one lane. This will enable a contra-flow bus link to

George's Quay against the current one-way eastbound traffic flow;

- a short length of westbound bus lane will be provided on Sir John Rogerson's Quay between Forbes Street and Cardiff Lane.

Alternative access to Cardiff Lane from Sir John Rogerson's Quay is available via Forbes Street and Misery Hill.

At the eastern end of Sir John Rogerson's Quay at Britain Quay, the proposed Dodder Public Transportation Bridge will connect to Ringsend at York Road. No general traffic will be permitted to use this bridge crossing.

A continuous two-way segregated cycleway will be provided on both sides of the River Liffey.

4.4 Samuel Beckett Bridge

The southbound bus lane across Samuel Beckett Bridge will be retained as per the existing arrangement, as continuous bus lanes are proposed in both directions on Custom House Quay and North Wall Quay.

4.5 Tom Clarke Bridge to Sean Moore Road – York Road

A cycle route is proposed towards the Poolbeg Peninsula via the western edge of Ringsend Park. The segregated cycle track on the green area alongside York Road and Pigeon House Road is no longer proposed. Instead the cycle route will connect to the East Coast Trail at Sean Moore Road, via Pembroke Cottages, Cambridge Park, the western side of Ringsend Park, and Kerlogue Road. A connection to the Poolbeg SDZ Lands will also be provided from Irishtown Stadium via Bremen Road. On the route along the River Liffey cyclists will share York Road and Pigeon House Road on quiet streets with general traffic.



4.6 Key Changes from the Preferred Route Published in March 2020

- Improved cycle facilities are proposed linking from the Samuel Beckett Bridge to Cardiff Lane and Sir John Rogerson's Quay;
- Bus stop locations have been modified in this revised proposal – with some bus stops relocated or removed to achieve a better spacing between stops, while also ensuring that each stop is sited in the best location to serve surrounding neighbourhoods. These proposals will also ensure a more efficient bus network operation. The stops which have been identified for relocation are presented in drawings in the Appendix of this brochure.

4.7 Key Facts

- Approximate number of properties that may be impacted **3**
- Approximate number of on-street parking spaces that may be removed **64**
- Approximate number of trees that may be removed **132**
- Approximate route length: **3.2kms**
- Approximate cycle route length: **5kms**
- Current bus journey time: **up to 35 mins**
- BusConnects journey time: **15-18 mins**
- Future Bus journey time without BusConnects: **45 mins +**

5. Understanding the terminology

1. Core Bus Corridor (CBC):

Part of the overall BusConnects Programme is to create 16 radial core bus corridors (CBC). A CBC is an existing road with bus priority so that buses can operate efficiently, reliably and punctually. This generally means full length dedicated bus lanes on both sides of the road from start to finish of each corridor or other measures to ensure that buses are not delayed in general traffic congestion. The bus lanes will be alongside segregated cycle lanes/tracks where feasible and general traffic.

2. Segregated Cycle Tracks:

A segregated cycle track is a separate section of the road dedicated for cycling only. This space will generally be isolated from other vehicular traffic by a physical kerb. Where it is not physically possible to have segregated cycle tracks there will be the option of quiet roads and shared cycling on reduced speed roads for cyclists.

3. Emerging Preferred Route (EPR):

The NTA published outline plans for each of the 16 CBCs in a non-statutory public consultation process in 2018/2019. The options were called Emerging Preferred Routes (EPR), in some cases with multiple sub-options, to inform the public of the likely layout of the roadway with the necessary CBC infrastructure in place. They included possible impacts on front gardens, and likely changes to how traffic will operate to facilitate bus priority.

4. Preferred Route Option (PRO):

Following consideration of the public submissions about the 16 EPR's, the core bus corridor proposals have been reviewed and amended. They are now being presented as the Preferred Route Option (PRO) and are subject to a further round of non-statutory public consultation.

They are not final proposals as they are subject to further consideration from this round of public consultation and also subsequent examination in the context of environmental impact assessment.

5. Bus Gate



A Bus Gate is a sign-posted short length of stand-alone bus lane. This short length of road is restricted exclusively to buses, taxis and cyclists plus emergency vehicles. It facilitates bus priority by removing general through traffic along the overall road where the bus gate is located. General traffic will be directed by signage to divert away to other roads before they arrive at the bus gate. To see an animation of how a Bus Gate will work, please visit our website www.busconnects.ie.

6. Signal Controlled Priority (SCP):

Signal Control Priority uses traffic signals to enable buses to get priority ahead of other traffic on single lane road sections, but it is typically only effective for short distances. This typically arises where the bus lane cannot continue due to obstructions on the roadway. An example might be when a road has pinch-points where it narrows due to existing buildings or structures that cannot be removed to widen the road to make space for a bus lane. It works through the use of traffic signal controls (typically at junctions) where the bus lane and general traffic will be stopped at the signal to allow the bus pass through the narrow section first, when the bus has passed the general traffic will then be allowed through the lights. To see an

animation of a how Signal Controlled Priority will work, please visit our website www.busconnects.ie

7. Toucan Crossing:

A Toucan Crossing is a roadway crossing designed to enable both pedestrians and cyclists to cross the road with purposefully designed signal controls.

8. Quiet Street Treatment:

Where CBC roadway widths cannot facilitate cyclists without significant impact on bus priority, alternative cycle routes are explored for short distances away from the CBC bus route. Such offline options may include directing

cyclist along streets with minimal general traffic other than car users who live on the street. They are called Quiet Streets due to the low amount of general traffic and are deemed suitable for cyclists sharing the roadway with the general traffic without the need to construct segregated cycle tracks or painted cycle lanes. The Quiet Street Treatment would involve appropriate advisory signage for both the general road users and cyclists.

9. Urban Realm:

Urban Realm refers to the everyday street spaces that are used by people to cross, shop, socialise, play and use for activities such as walking, exercise or commuting to/from work. The Urban Realm encompasses all streets, squares, junctions and other rights-of-way in residential, commercial and civic use areas as well as seating, trees and other enhancements. When well designed and laid out with care in a community setting, it enhances the everyday lives of residents and those passing through.

Signal Controlled Priority (SCP)



1. Traffic proceeds as normal.

2. As the bus approaches, the light signal changes to halt general traffic.

3. The bus has priority to proceed.

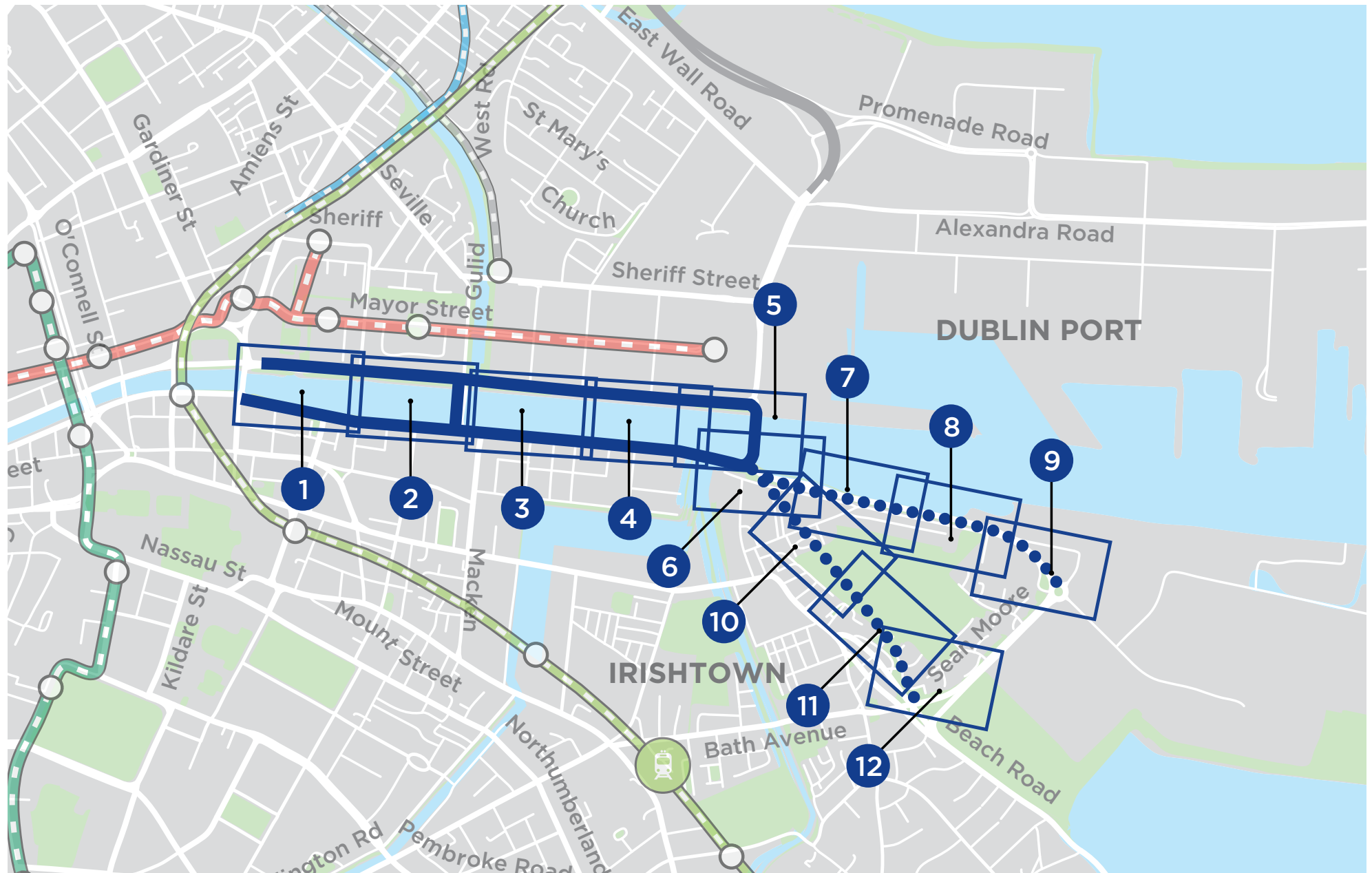
4. When the bus has cleared the junction, general traffic proceeds.



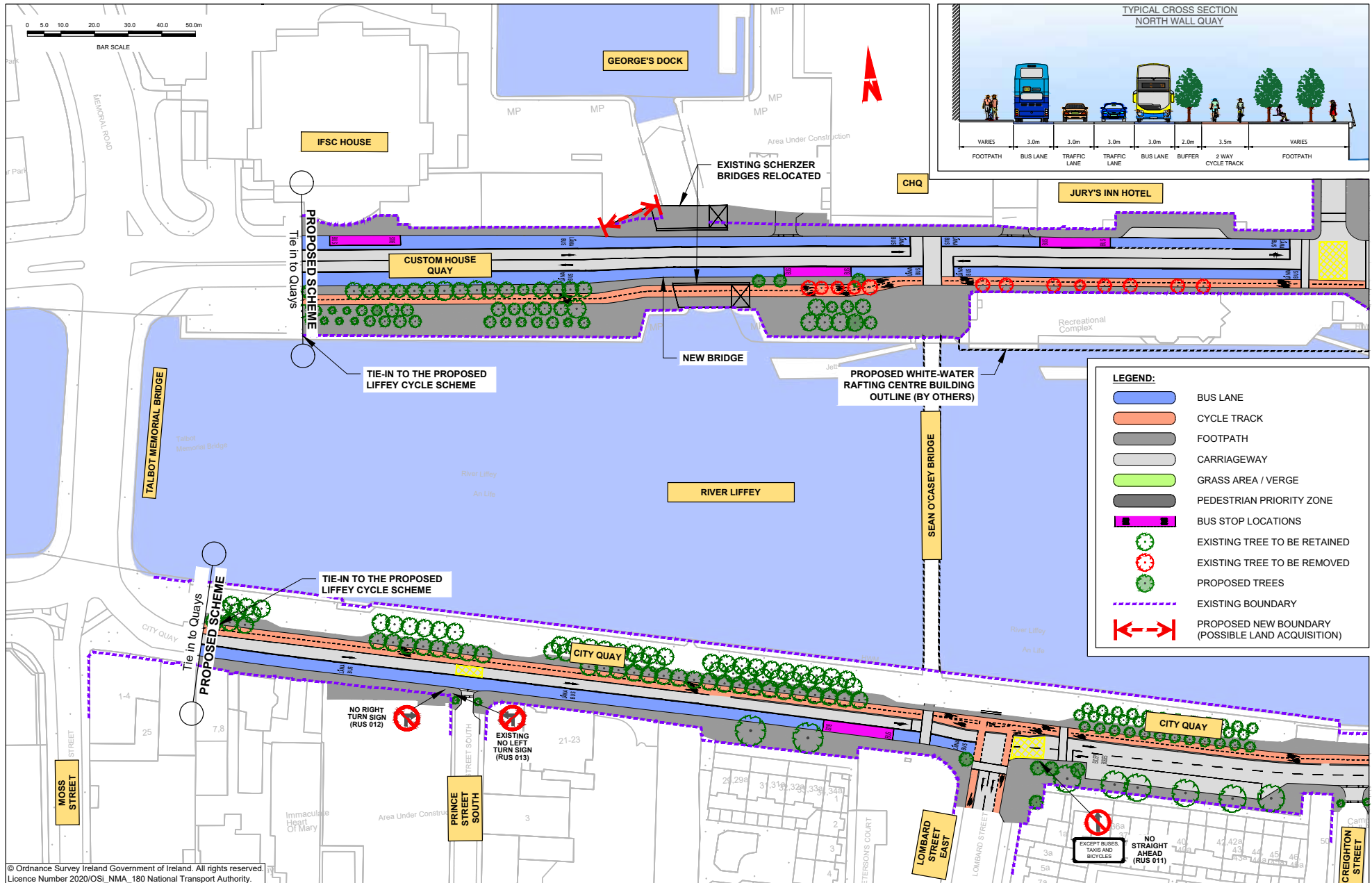
6. Appendices

Index maps
Route maps

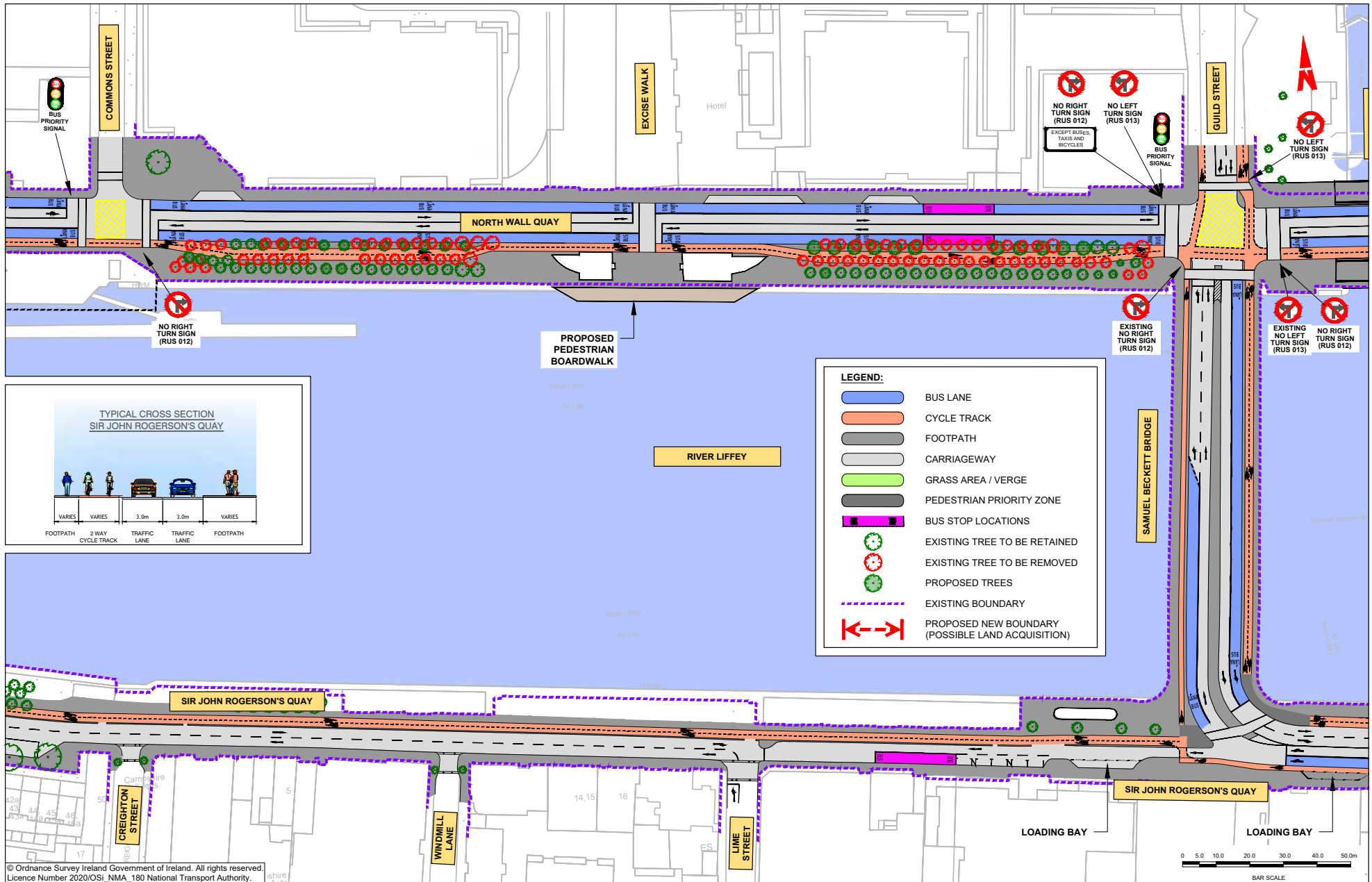




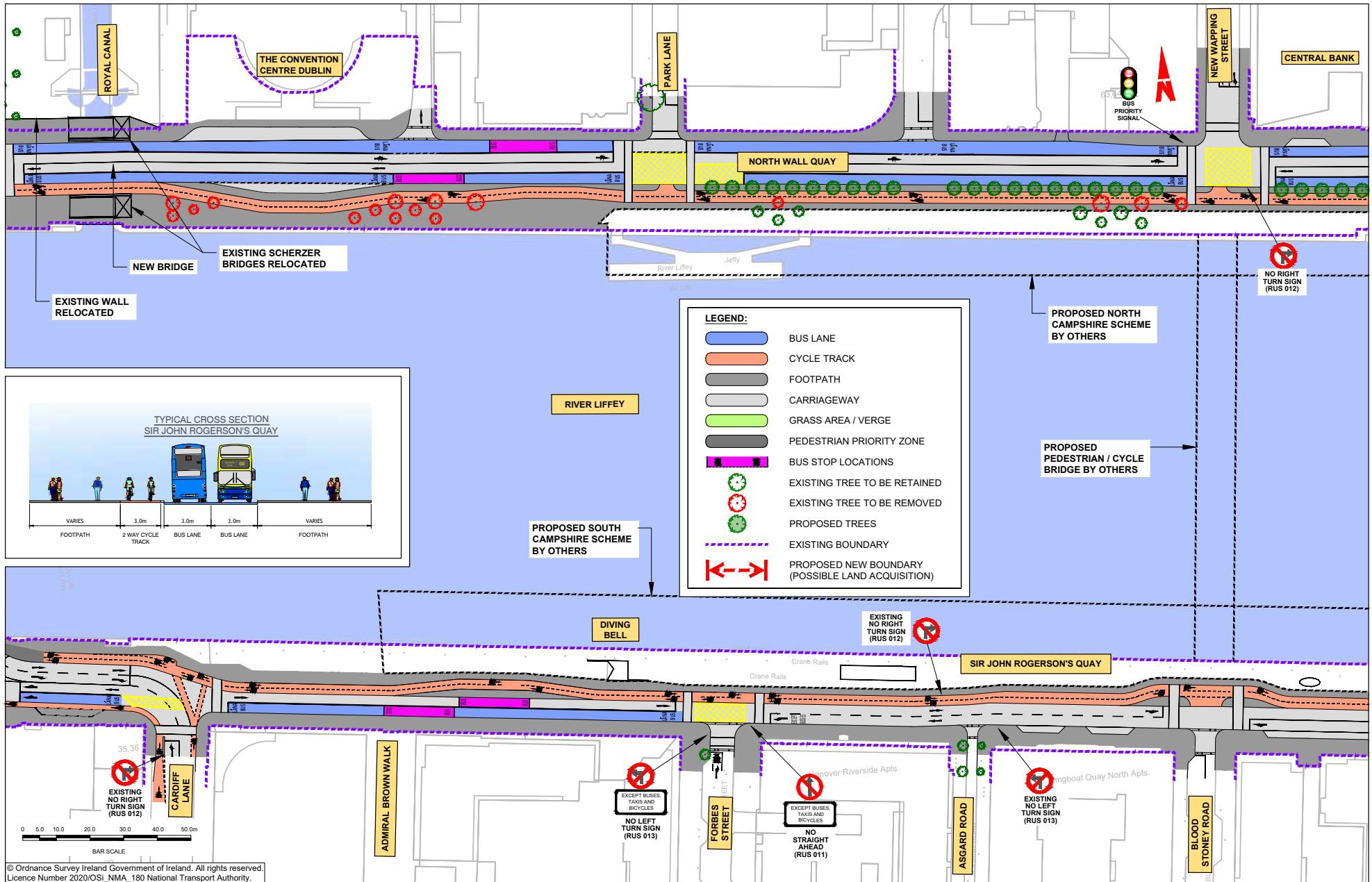
NOTE: The Preferred Route shown on the following drawings is indicative only and is subject to change following consultation and as part of the design development process.



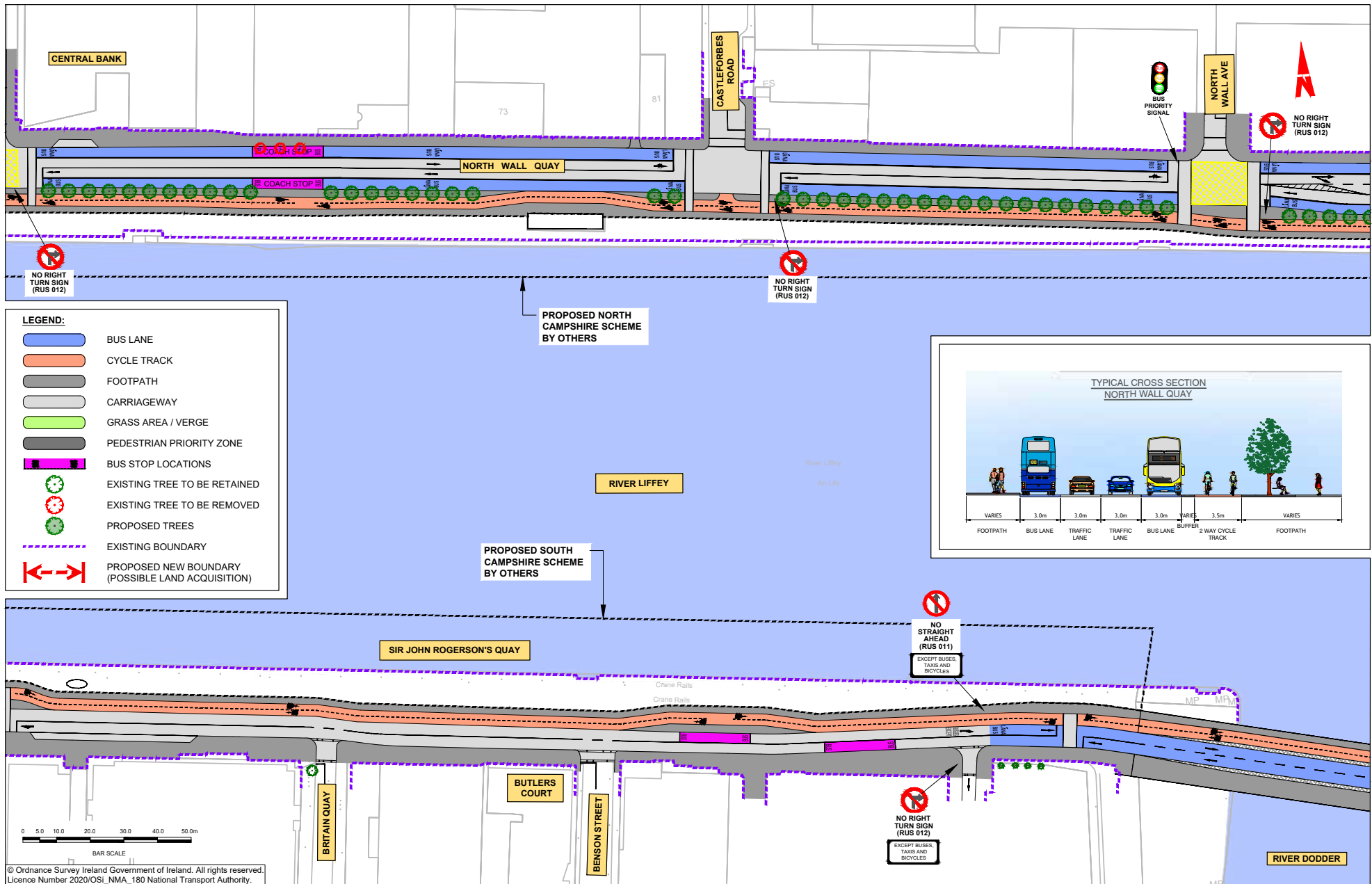


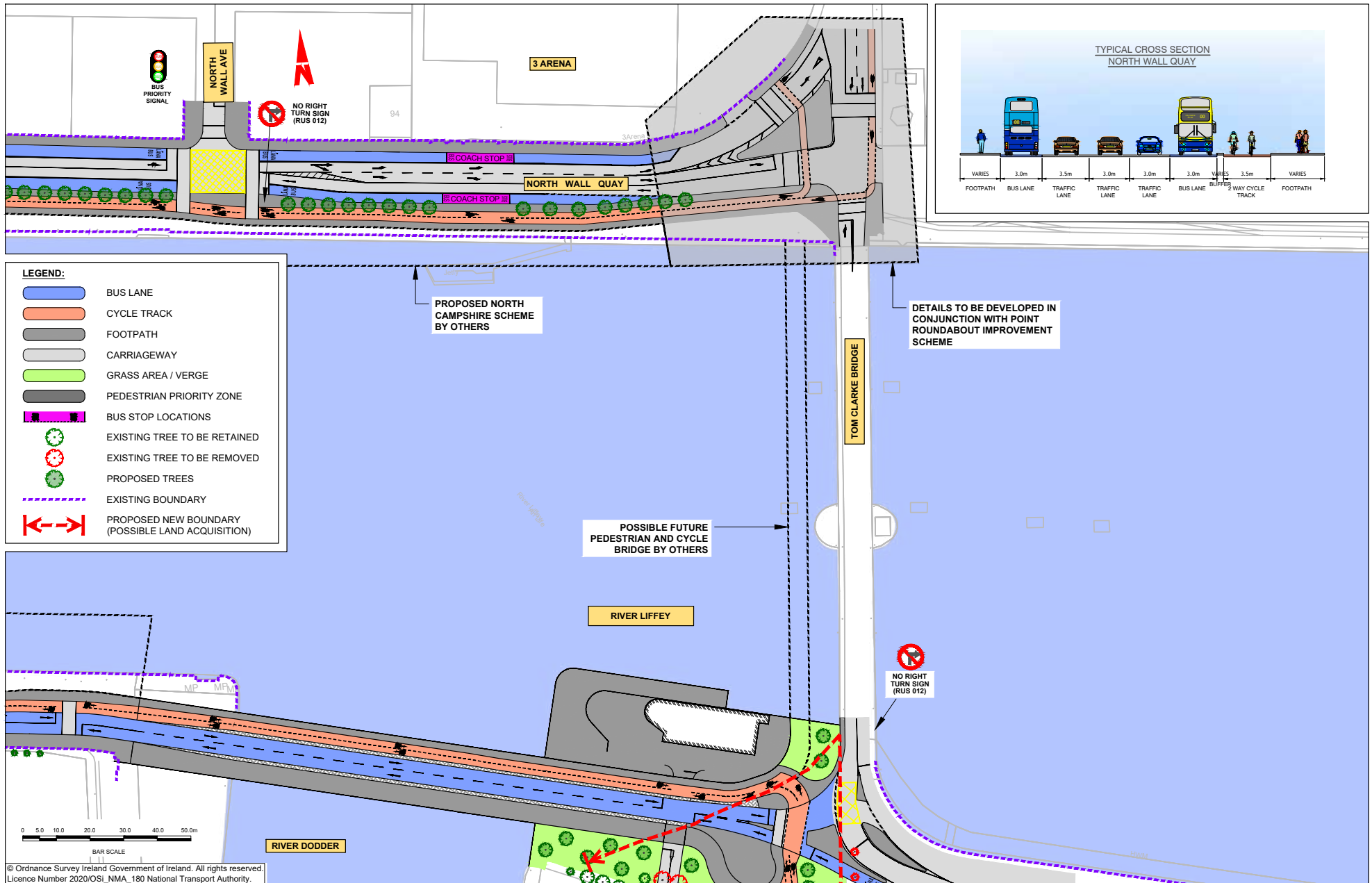




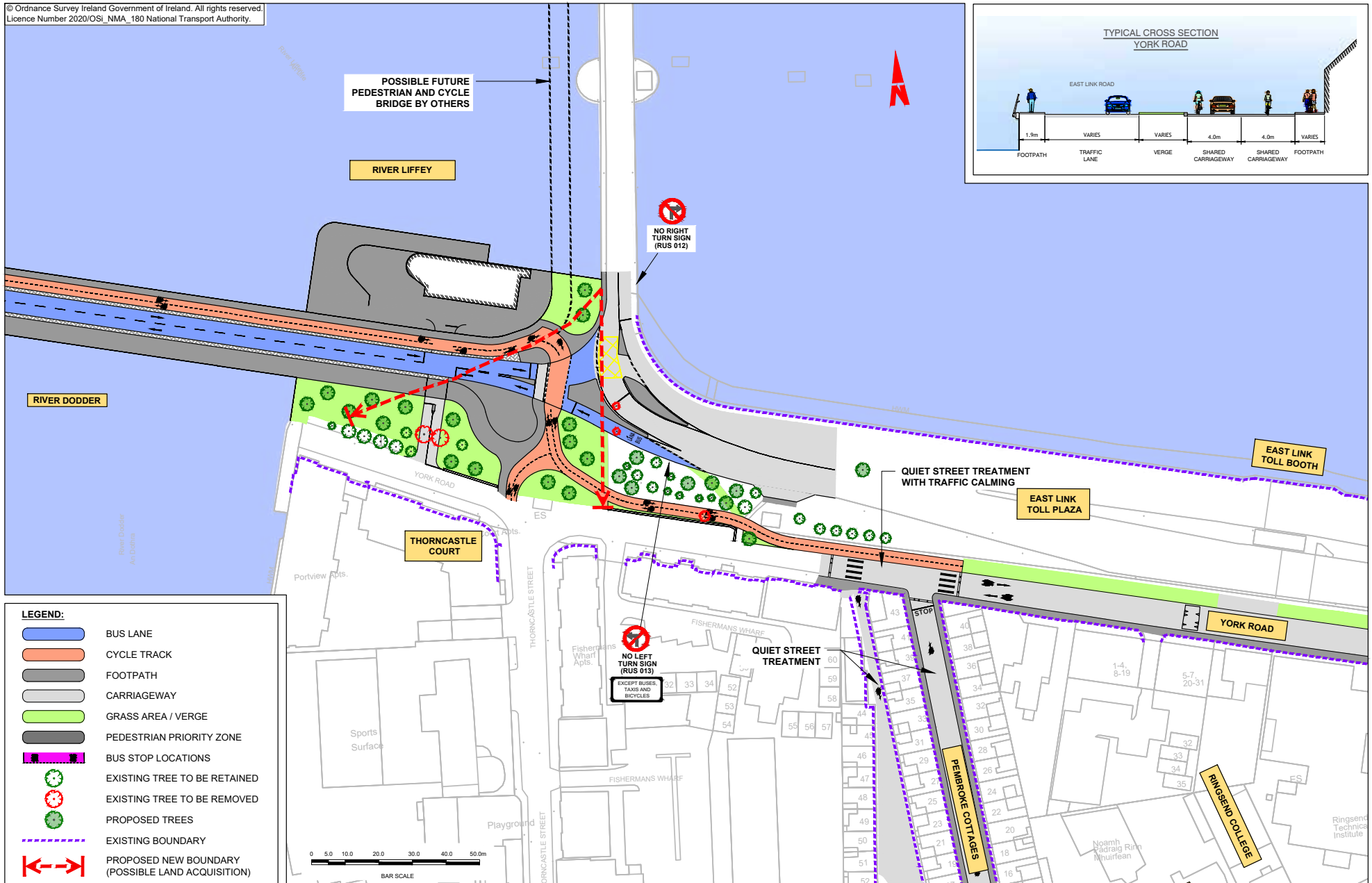




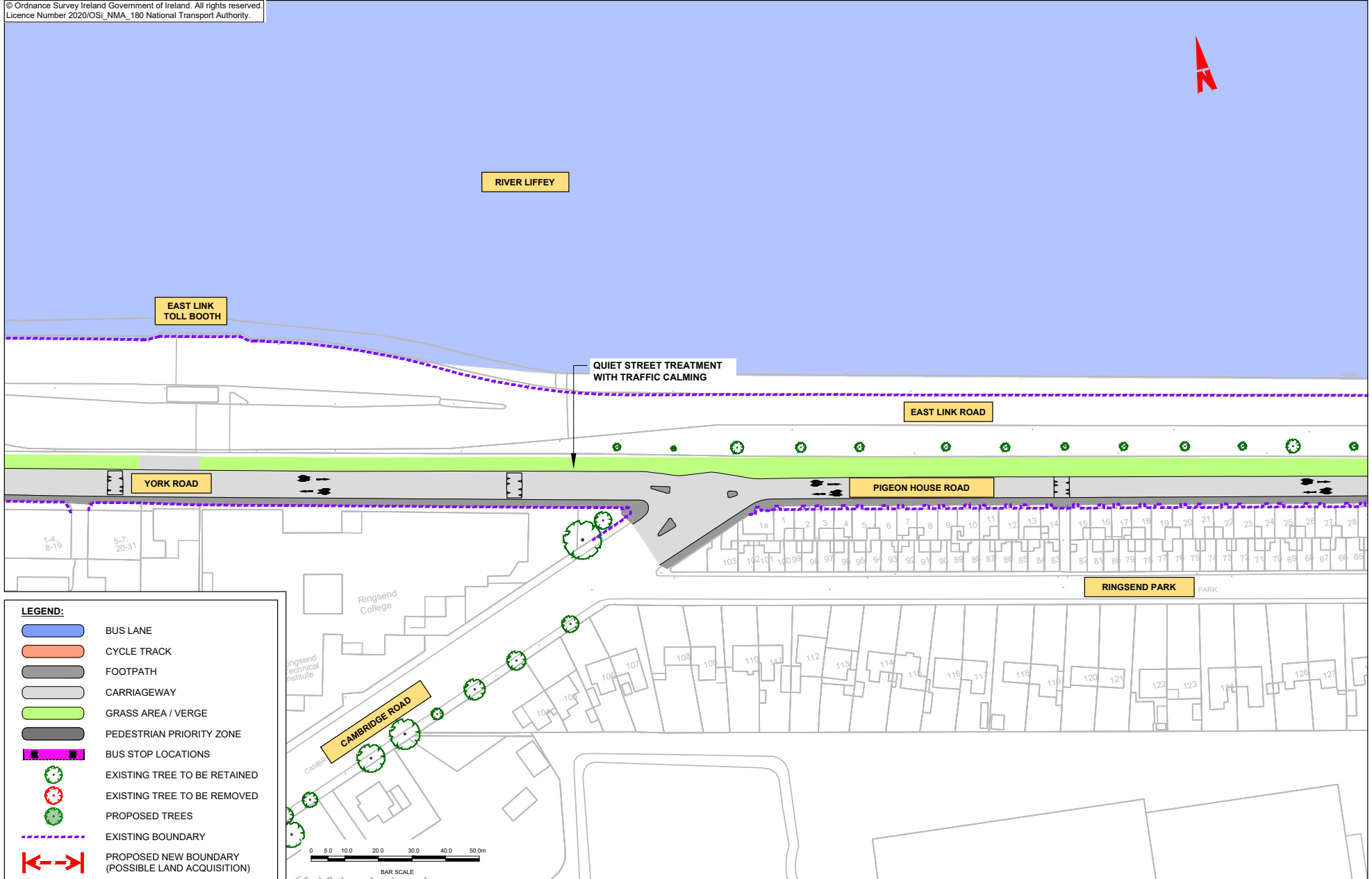




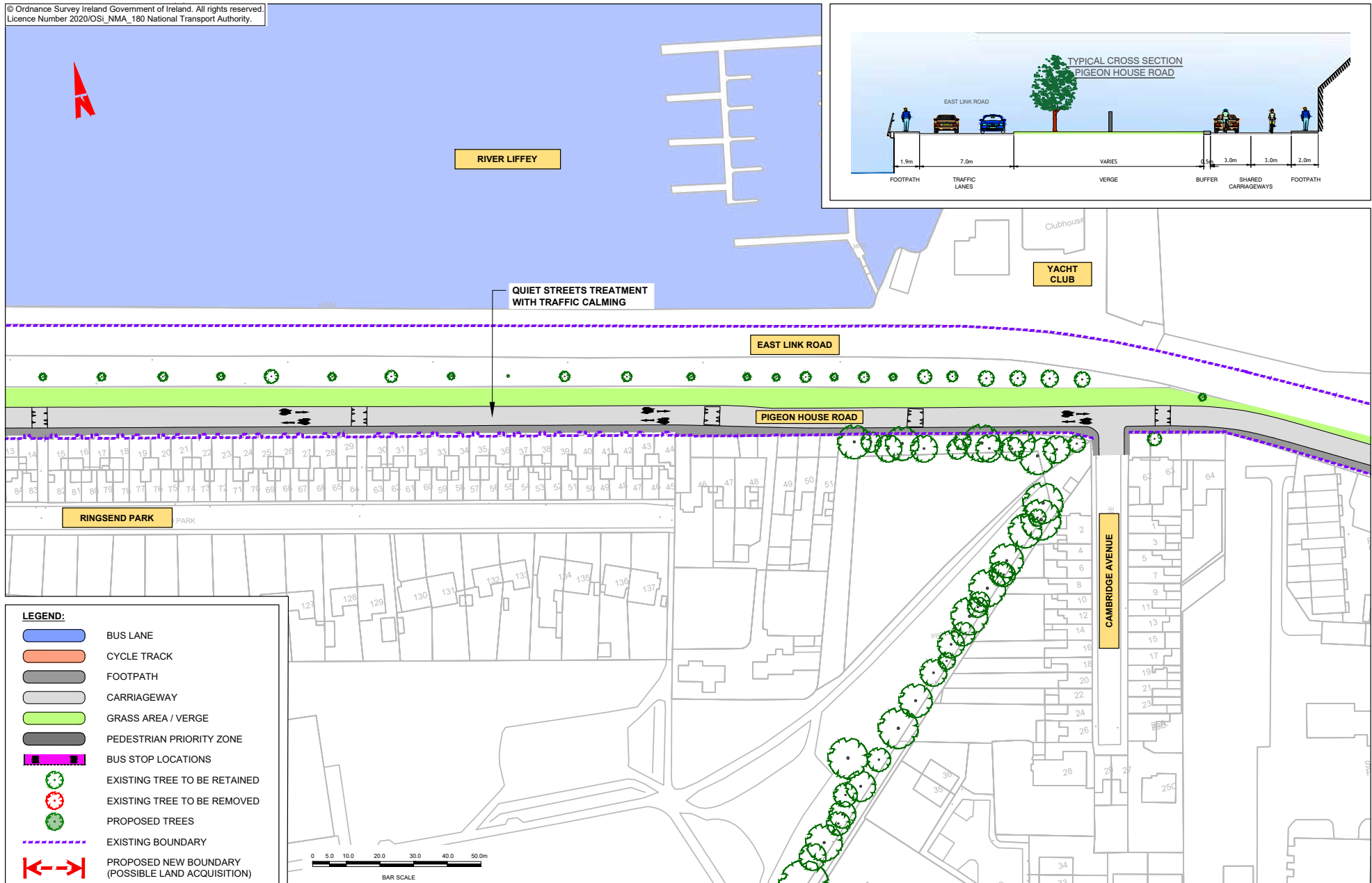
© Ordnance Survey Ireland Government of Ireland. All rights reserved.
Licence Number 2020/OSI_NMA_180 National Transport Authority.



© Ordnance Survey Ireland Government of Ireland. All rights reserved.
Licence Number 2020/OSi_NMA_180 National Transport Authority.



© Ordnance Survey Ireland Government of Ireland. All rights reserved.
Licence Number 2020/OSI_NMA_180 National Transport Authority.

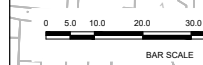


© Ordnance Survey Ireland Government of Ireland. All rights reserved.
Licence Number 2020/OSI_NMA_180 National Transport Authority.



LEGEND:

- BUS LANE
- CYCLE TRACK
- FOOTPATH
- CARRIAGEWAY
- GRASS AREA / VERGE
- PEDESTRIAN PRIORITY ZONE
- BUS STOP LOCATIONS
- EXISTING TREE TO BE RETAINED
- EXISTING TREE TO BE REMOVED
- PROPOSED TREES
- EXISTING BOUNDARY
- PROPOSED NEW BOUNDARY (POSSIBLE LAND ACQUISITION)

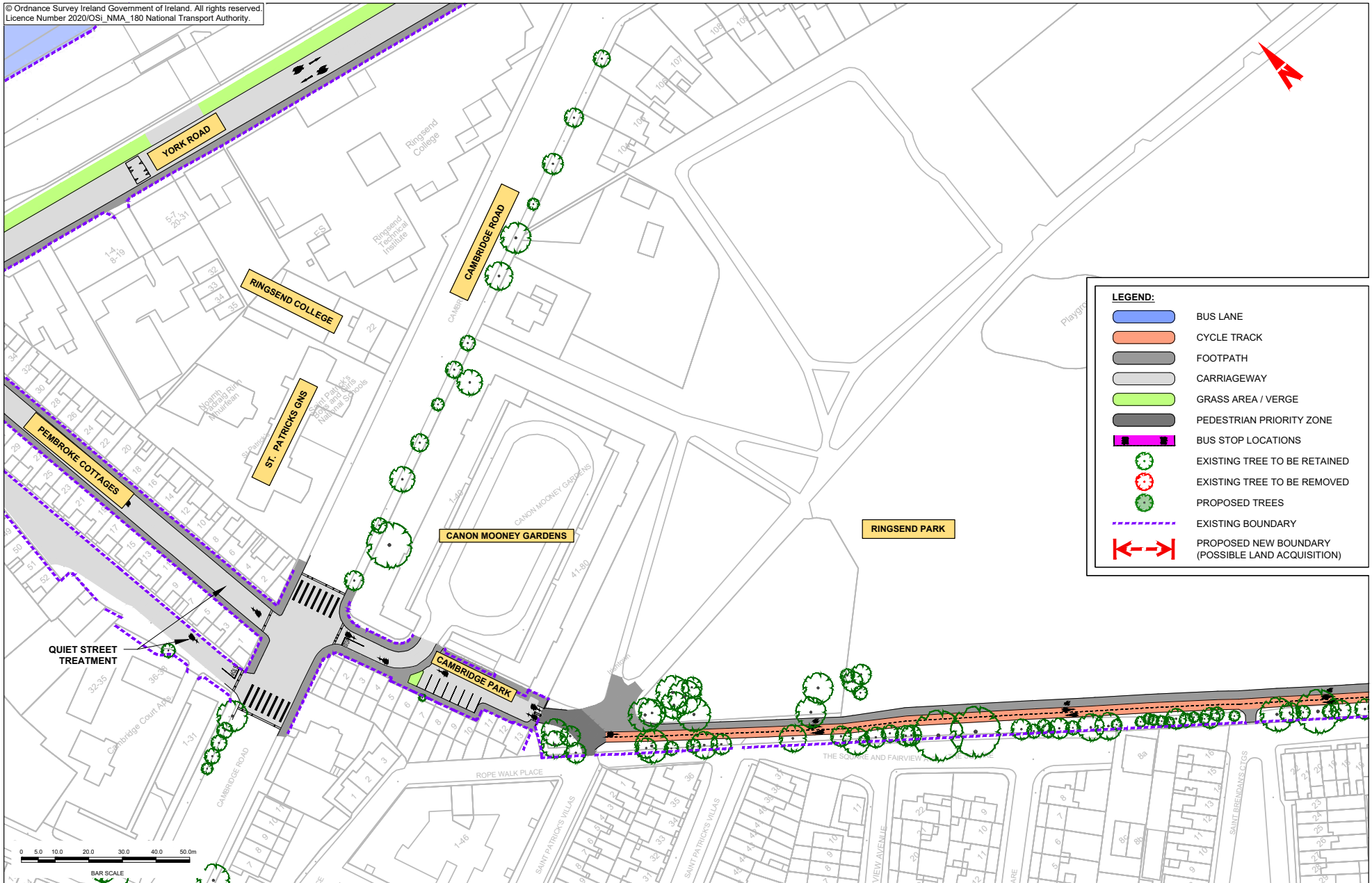


ROUNDABOUT TO BE UPGRADED TO A SIGNALISED JUNCTION WITH TOUCAN CROSSING AS PROPOSED IN SDZ (BY OTHERS)

EXISTING ROAD CLOSURE (AUTUMN 2020)

QUIET STREETS TREATMENT WITH TRAFFIC CALMING

© Ordnance Survey Ireland Government of Ireland. All rights reserved.
Licence Number 2020/OSI_NMA_180 National Transport Authority.

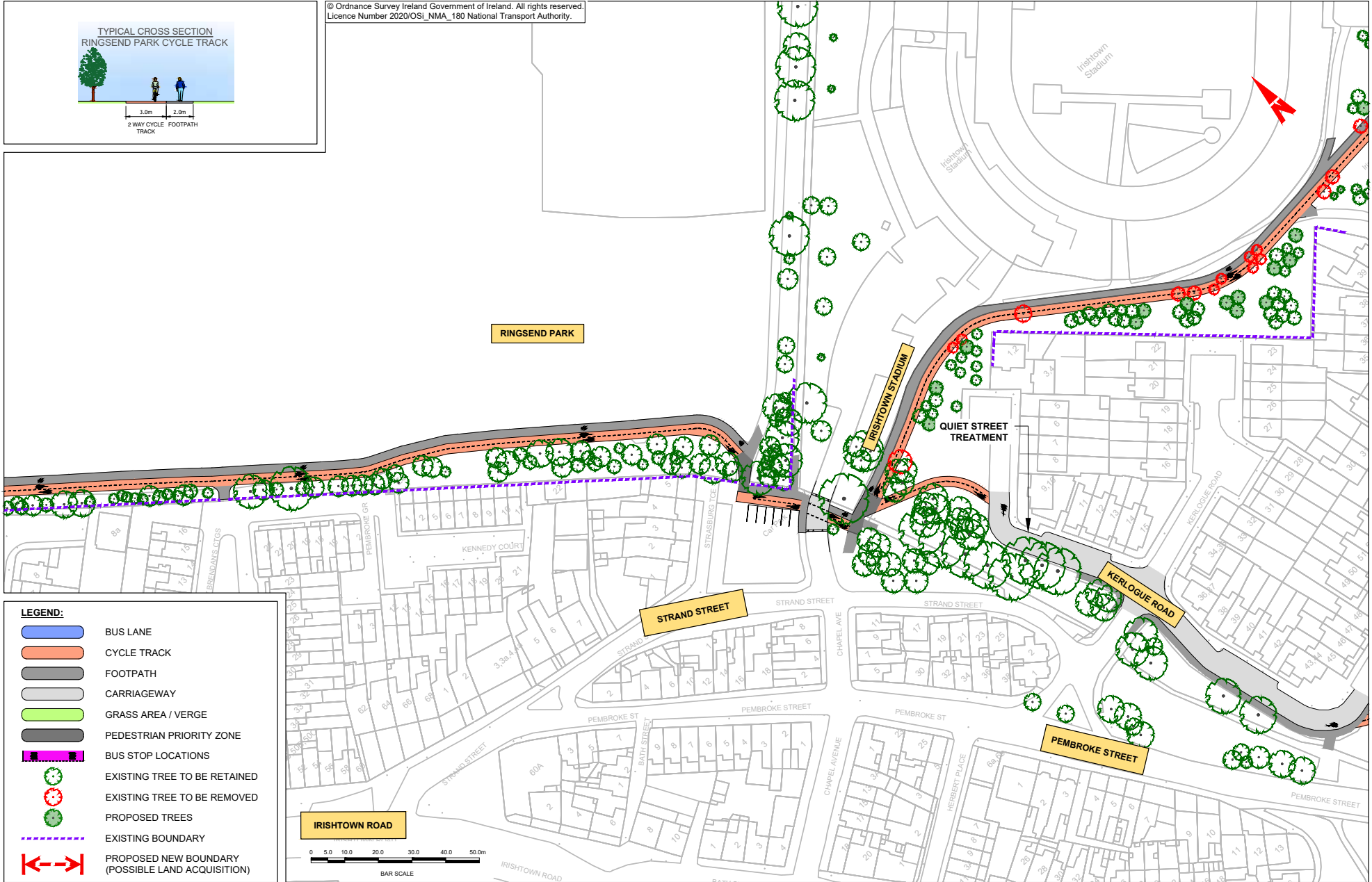
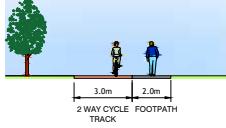


LEGEND:

- BUS LANE
- CYCLE TRACK
- FOOTPATH
- CARRIAGEWAY
- GRASS AREA / VERGE
- PEDESTRIAN PRIORITY ZONE
- BUS STOP LOCATIONS
- EXISTING TREE TO BE RETAINED
- EXISTING TREE TO BE REMOVED
- PROPOSED TREES
- EXISTING BOUNDARY
- PROPOSED NEW BOUNDARY (POSSIBLE LAND ACQUISITION)

© Ordnance Survey Ireland Government of Ireland. All rights reserved.
Licence Number 2020/OSI_NMA_180 National Transport Authority.

TYPICAL CROSS SECTION
RINGSEND PARK CYCLE TRACK



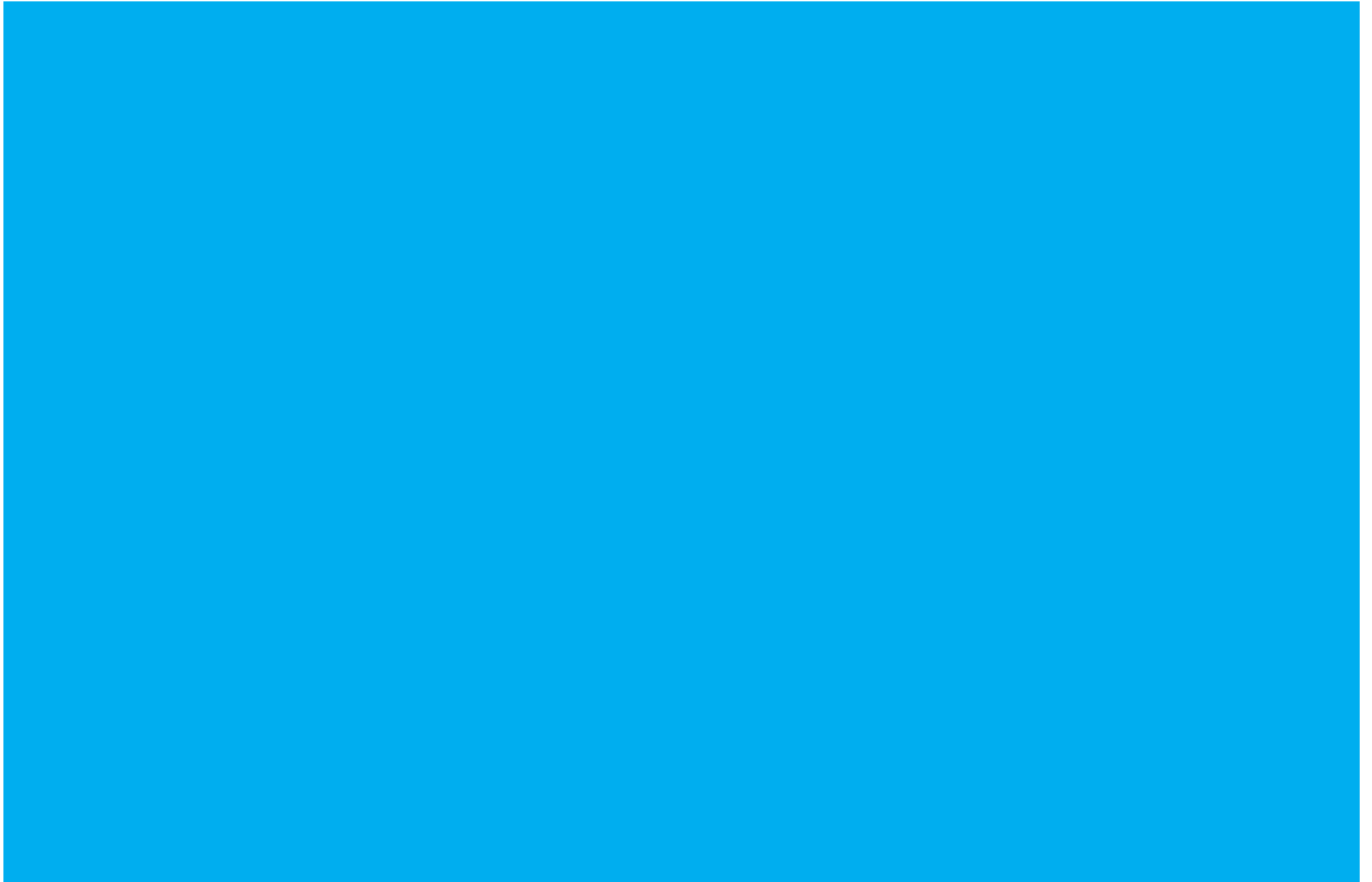
LEGEND:

- BUS LANE
- CYCLE TRACK
- FOOTPATH
- CARRIAGEWAY
- GRASS AREA / VERGE
- PEDESTRIAN PRIORITY ZONE
- BUS STOP LOCATIONS
- EXISTING TREE TO BE RETAINED
- EXISTING TREE TO BE REMOVED
- PROPOSED TREES
- EXISTING BOUNDARY
- PROPOSED NEW BOUNDARY (POSSIBLE LAND ACQUISITION)



© Ordnance Survey Ireland Government of Ireland. All rights reserved.
Licence Number 2020/OSI_NMA_180 National Transport Authority.







Údarás Náisiúnta Iompair
National Transport Authority

National Transport Authority

Harcourt Lane,
Dun Sceine,
Dublin 2.

D02 WT20



Project Ireland 2040
Building Ireland's Future